

# Out of Phase Doesn't Mean Out of Luck

By MARCILIO MATOS and KURT MARFURT

Interpreters use phase each time they design a wavelet to tie seismic data to a well log synthetic. A 0-degree phase wavelet is symmetric with a positive peak, while a 180-degree phase wavelet is symmetric with a negative trough. Given a 0-degree phase source wavelet, thin beds give rise to  $\pm 90$ -degree phase wavelets.

Mathematicians define phase using a "complex" trace, which is simply a pair of traces:

- ▶ The first trace is the measured seismic data, and forms the "real" part of the complex trace.

- ▶ The second trace is the Hilbert transform of the measured data, and forms the imaginary part of the complex trace.

Note in figure 1a that when the real part of the trace is positive, the imaginary part is a minus-to-plus zero crossing. In contrast, when the real part of the data is a minus-to-plus zero crossing, the Hilbert transform is a trough.

This latter phenomenon allows us to use the "instantaneous" Hilbert transform to generate an amplitude map of a thin bed that was previously picked on the well log as zero crossing of the measured (or real) data.

Now let's map both parts of the complex trace on the same plot.

As you may remember from high school algebra, the real part is plotted against the x-axis and the imaginary part against the y-axis. We plot the same 100 ms (50 samples) of data "parametrically" on the complex plane.

Note in figure 1b that the waveform progresses counterclockwise from sample to sample.

We map this progression using the phase between the imaginary and real parts. If we use the arctangent to compute the phase, we encounter a 360-degree discontinuity each time we cross  $\pm 180$  degrees (figure 1c). Note how peaks and troughs in figure 1a appear at 0 degrees and  $\pm 180$  degrees in figure 1c.

Now, if we computed the phase by hand, we would obtain the much more continuous phase shown in figure 1d.

Figure 1d is an "unwrapped" version of figure 1c, and in this unwrapped image, note there is still a discontinuity at  $t=850$  ms; however, this discontinuity is associated with waveform interference (geology) and not mathematics.

Such discontinuities form the basis of the "thin-bed indicator" instantaneous attribute introduced 30 years ago.



MATOS



MARFURT

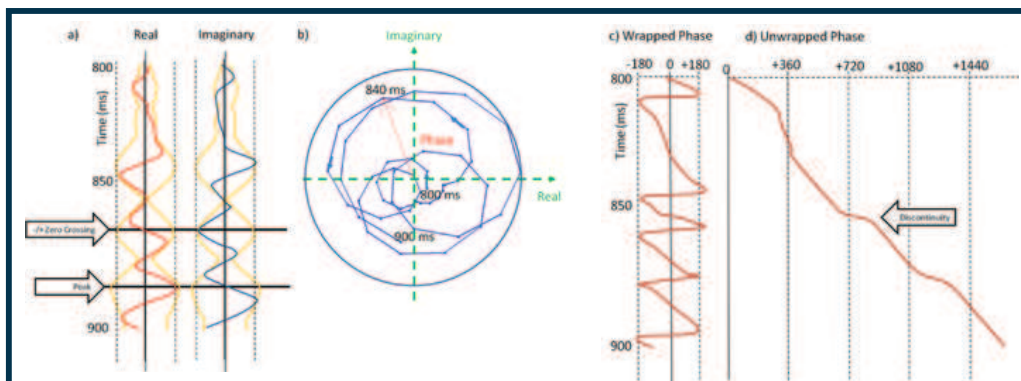


Figure 1 – (a) The "complex" trace composed of the original measured trace,  $d(t)$ , (the real part, in red) and its Hilbert transform,  $d^h(t)$ , (the imaginary part, in blue) extracted from the survey shown in figures 2 and 3. The envelope and its reverse are plotted in orange. Note how it "envelopes" the real and the imaginary trace (and indeed any phase-rotated version of the trace). (b) The complex trace plotted parametrically against time on a complex plot. Each time sample can also be represented in polar coordinates as a magnitude and phase, with phase being measured counterclockwise from the real axis. (c) The wrapped phase computed as  $\phi = \text{ATAN2}[d^h(t), d(t)]$ . The definition of the arctangent gives rise to discontinuities at  $\pm 180^\circ$ . (d) The unwrapped phase, retaining only discontinuities associated with waveform interference (geology and crossing noise).

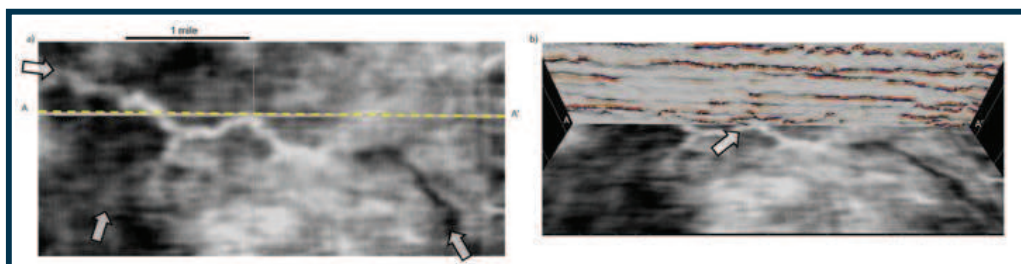


Figure 2 – (a) A time slice at  $t=842$  ms through a data volume acquired over Stratton field, south Texas. Block arrow indicates a channel that gives rise to an amplitude anomaly. (b) The same time slice co-rendered with a vertical slice through the corresponding spectral phase residue volume. Seismic data courtesy of the University of Texas Bureau of Economic Geology.

Spectral decomposition is a well-established interpretation technique. The seismic data are decomposed into a suite of spectral components, say at intervals of five Hz.

Most commonly we use spectral magnitude components to map thin bed tuning, while some workers use them to estimate seismic attenuation,  $1/Q$ . The

phase components are less commonly used, but often delineate subtle faults.

Here, we will show how the identification of discontinuities in the unwrapped instantaneous phase discussed above can be extended to unwrapped phase of spectral components.

Let's illustrate the use of such

discontinuities by applying them to the well-studied Stratton Field data volume acquired over a south Texas fluvial-deltaic system by the University of Texas Bureau of Economic Geology.

...

In our Stratton Field example, thin channels give rise to tuning effects and subtle amplitude anomalies as shown in figure 2a. While we can detect the channel system on time and horizon slices, they are difficult to see on vertical slices through the seismic amplitude data (figure 3a).

Determining the thickness of the channel on the seismic amplitude image is even more difficult. The corresponding slice through the instantaneous phase volume (figure 3b) shows a subtle change, but again, does not help delineate the channel.

One approach to improving this phase is to unwrap the instantaneous phase volume (as we did in figure 1d), and compute its vertical derivative, thereby highlighting phase discontinuities due to waveform interference (in this case geology). Our approach is based on the computation of phase residues of spectral components computed at five Hz intervals, which provides not only an image of waveform interference, but also a measure of our confidence in the interference pattern (provided by the corresponding spectral magnitude) and

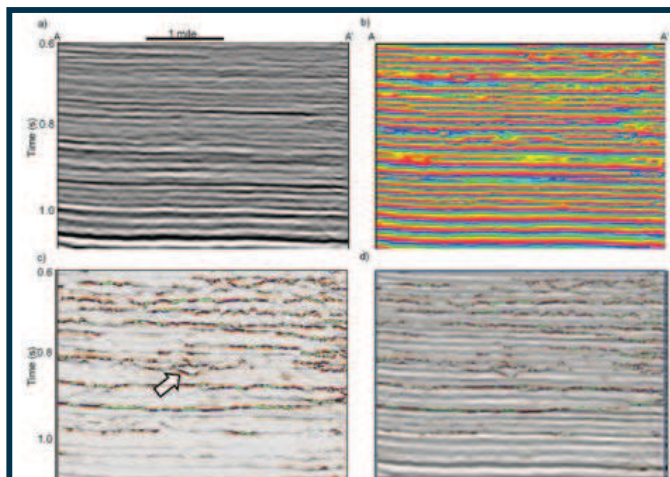


Figure 3 – Vertical slices along line AA' shown in the previous image through (a) the seismic amplitude, (b) the instantaneous phase, (c) the phase residue and (d) the co-rendered phase residue and seismic amplitude volumes. The instantaneous phase is plotted using a cyclical color bar. The phase residues are color coded by the magnitude and frequency of the spectral components at which they occur.

Continued on next page



# Inaugural Baku Conference Had an Integrated Appeal

The first jointly held "International Geological and Geophysical Conference on Integrated Approach for Unlocking Hydrocarbon Resources," offered last October in Baku, Azerbaijan, proved to be a big success in terms of both content and attendees.



DVORAKOVA

The conference, organized by the Azerbaijan Society of Petroleum Geologists, Azerbaijan National Committee of Geophysics and EAGE local chapter jointly with AAPG, SEG and the Russian Association, drew nearly 300 participants.

Among the countries represented were Great Britain, Bulgaria, Germany, Georgia, India, Iran, Kazakhstan, Norway, Russia, Romania, Austria, the United States, Ukraine and France.

Natig Aliyev, Azerbaijan's minister of industry and energy, opened the conference with a talk on the region's current activity well as its potential.

Other opening session speakers included AAPG European Region President Vlasta Dvorakova, AAPG member and SEG First Vice President William Abriol, and EAGE representative Roald van Borselen.

Some of the conference highlights included:

- ▶ A plenary session on Azerbaijan's exploration potential.
- ▶ A talk by Christian Giudicelli, general manager of Total E&P Azerbaijan, on renewed exploration activities in a mature oil province.
- ▶ Presentations on the giant and major

oil and gas accumulations of the South Caspian Basin.

"I felt the conference was a success ... maybe the strongest conference in Baku, with good representation from around the world and a very high level of student participation," said AAPG member Gregory Riley, BP's vice president of exploration geology. "I certainly enjoyed the mixture of geology and geophysics."

Riley also led a post-conference field trip for the event. 📍

## Rose & Associates

Courses Consulting Software

### Risk Analysis, Prospect Evaluation & Exploration Economics

Houston: Apr 15 – 19; Sept 23 – 27

Aberdeen: October 7 – 11

Calgary: Apr 22 – 26; Sept 16 – 20

### Risk, Uncertainty & Economic Analysis for Resource Assessment & Production Forecasting in Shale Plays

Houston: May 13 – 16; Oct 28 – 31

Denver: Aug 5 – 8

Calgary: Apr 15 – 18; Oct 7 – 10

<http://www.roseassoc.com/instruction>

### Improving E & P Effectiveness

# Advance the Way You Analyze Mud Gas

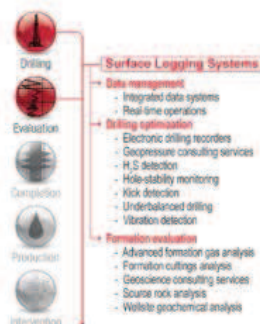
Weatherford's GC-TRACER™ surface gas detector reinvents formation gas analysis to provide vital intelligence for reservoir characterization



With precise composition in a wider spectrum of gas measurements, you can now

- identify fluid types, hydrocarbon maturity and degradation, sweet spots, fractures and faults;
- receive early indications of net pay, fluid mobility, porosity and relative permeability;
- improve fluid-sampling programs, pick casing points, geosteer horizontal wells and optimize frac design.

The GC-TRACER detector is **Tactical Technology™** that helps you make drilling, evaluation and completion decisions with greater certainty than ever before. Contact us at [sls@weatherford.com](mailto:sls@weatherford.com) or visit [gctracer.com](http://gctracer.com).



[weatherford.com](http://weatherford.com)

## Continued from previous page

the frequency component at which it occurs.

Figure 3c shows this computation, where the hue component of color corresponds to the frequency of the discontinuity and the intensity or brightness to its strength. A block arrow clearly delineates the top and bottom of the channel.

Figure 3d co-renders the phase residue image with the original seismic amplitude using 50 percent opacity.

• • •

Thin meandering channel are often visible on amplitude time slices (figure 2). Phase residues add the third dimension.

In a subsequent article, our colleagues will show how phase residues provide a powerful tool for geobody extraction and interpretation.

*(Editor's note: Marcilio Matos is a research scientist for Signal Processing Research, Training and Consulting, and co-investigator for the Attribute Assisted Seismic Processing and Interpretation Consortium at the University of Oklahoma, Norman. Marfurt, an AAPG member, is with the University of Oklahoma.)*